



資歷架構
Qualifications
Framework

Award Titles Scheme and Use of Credit: Policy and Implementation

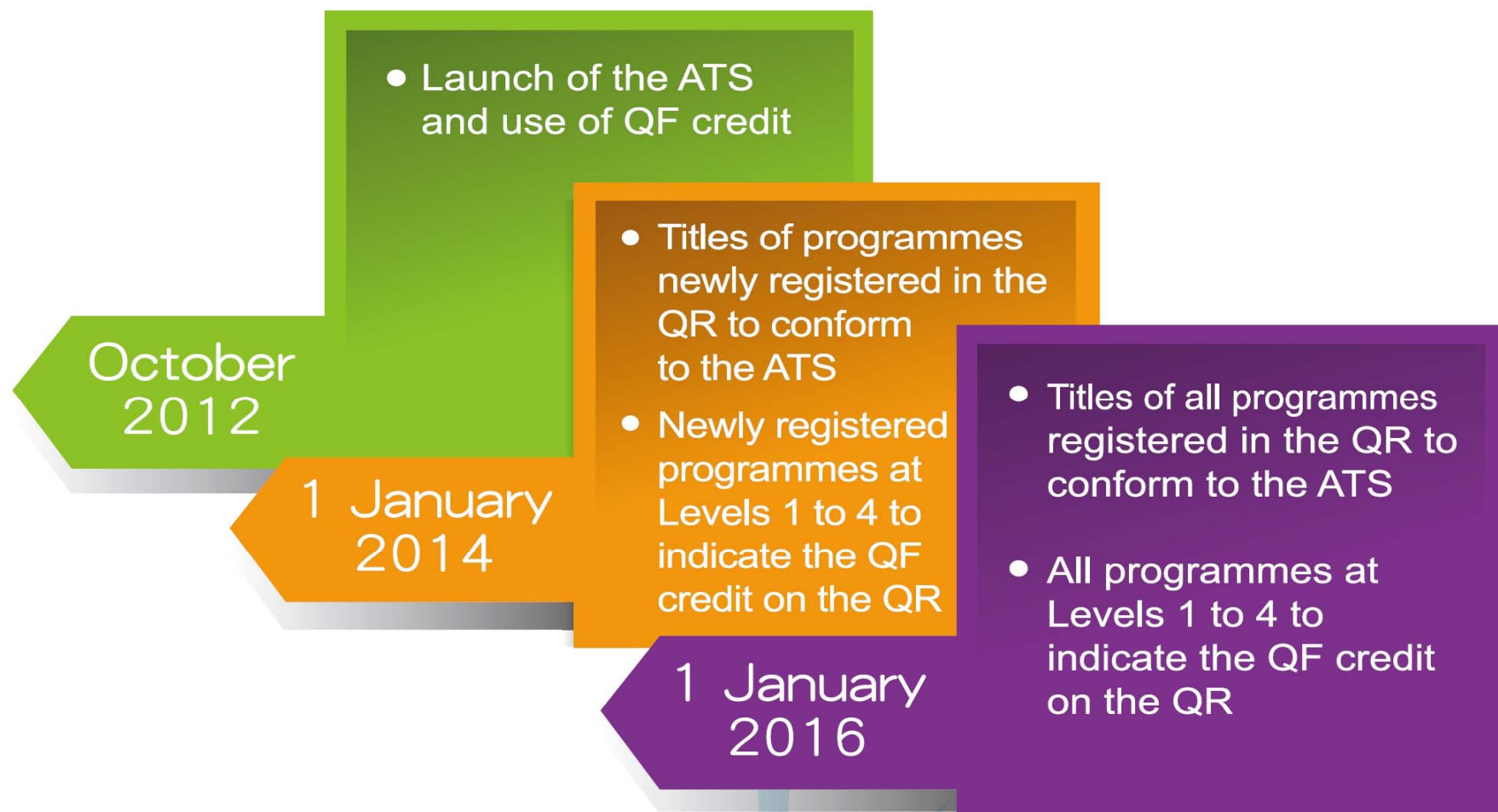
Qualifications Framework Secretariat

Requirements of QF-recognised Qualifications



- Successfully accredited
- Indication of QF Level
- Indication of QF Credit
- Conform to Award Titles Scheme (ATS)
- Additional requirement for SCS-based courses

Implementation Plan



Note: The timetable for indicating the QF credit of programmes at Level 5 or above will be subject to further consultation with stakeholders concerned. Details will be announced in due course.

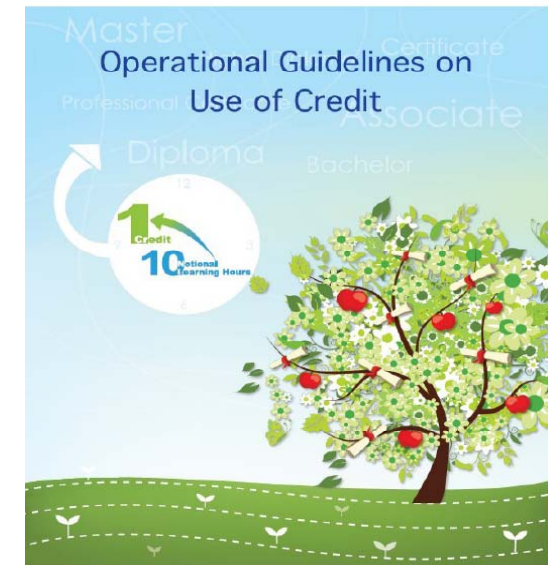
Training Workshops on Use of Credit



- 14 workshops by FSTE
- Participation of HKCAAVQ in respect of credit assessment
- Positive feedback from over 600 participants
 - ✓ More familiar with the concept of QF credit
 - ✓ Practical insights from HKCAAVQ
 - ✓ Exchange and sharing of good practices

Issues on Use of Credit

- Concept of average learners
- Justifications for deviations from Operational Guidelines
- Treatment of study hours for examination
- Difficulties in assignment of credit value to internship, project, practicum, etc
- Reference point/benchmark of similar programmes



Training Workshops by QA Body



- New series of workshops by HKCAAVQ starting from January 2014
- Focus on QF credit assessment
- Case study materials covering QF Level 1 - 5
- Schedule, content and arrangement to be announced
- Tailor-made workshops to operators on request basis

Progress of ATS



- Smooth transition
 - ✓ Over 65% of programmes already in compliance with ATS
 - ✓ 90% compliance expected by Q1 2014
- Two applications for special approval by Review Panel on Award Titles

Forward Plan

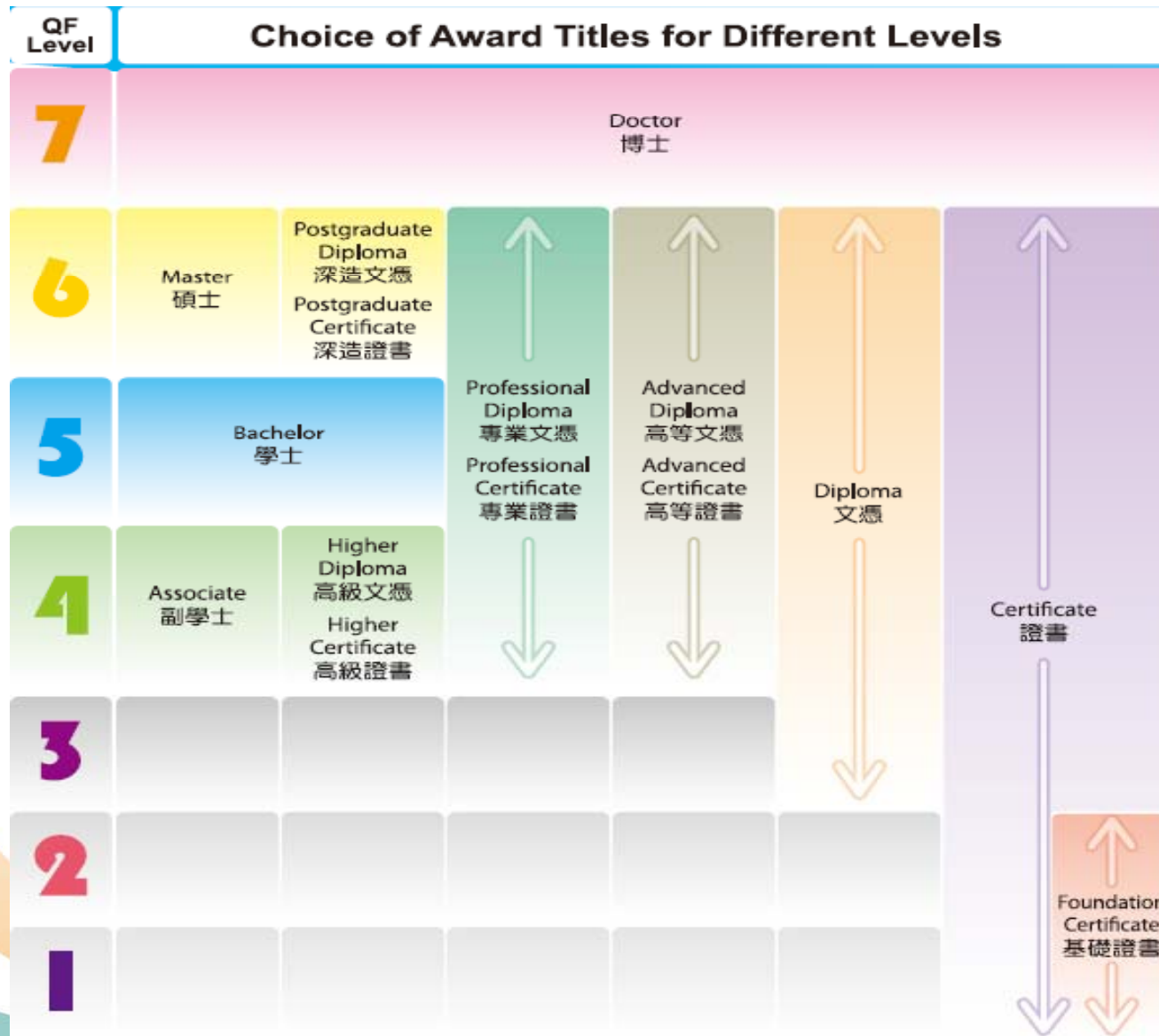


- Gradual compliance for operators on use of QF credit
- Supporting measures (publicity, briefings and workshops) to continue
- Timetable on use of QF credit for programmes at Level 5 & above to be consulted



Thank you

Award Titles Scheme (ATS)



QF Credit



- 1 QF credit = 10 notional learning hours
- Notional learning hours refer to amount of time an average learner expected to take to complete all the learning and achieve the learning outcomes upon assessment
- Including all modes of learning (eg. attendance in class, self-study, on-line learning, practical learning, assessment, etc)

